



Versatile, sustainable sound absorbers

Quietstone Light is a rigid, durable absorber made from recycled glass. The material is suitable for external use, indoor use and settings which require high impact resistance. It can be worked on site, pigmented or treated with a range of finishes and is non combustible, chemically inert and non fibrous. Panels can be either mechanically fixed or bonded and a range of sizes are available including custom options.

Key features:

- High sound absorption
- Non combustible
- Weather resistant
- Self bearing
- Easily cut on site
- 94% recycled glass
- Bespoke sizes available

Technical properties

Physical properties

Standard width	600mm
Standard length	1200mm
Thicknesses	15 - 100mm
We can make other sizes with a maximum length of 2.4m. A small set up charge is incurred	
Weight at 25mm	8 kg/m ²
Weight	320 kg/m ³

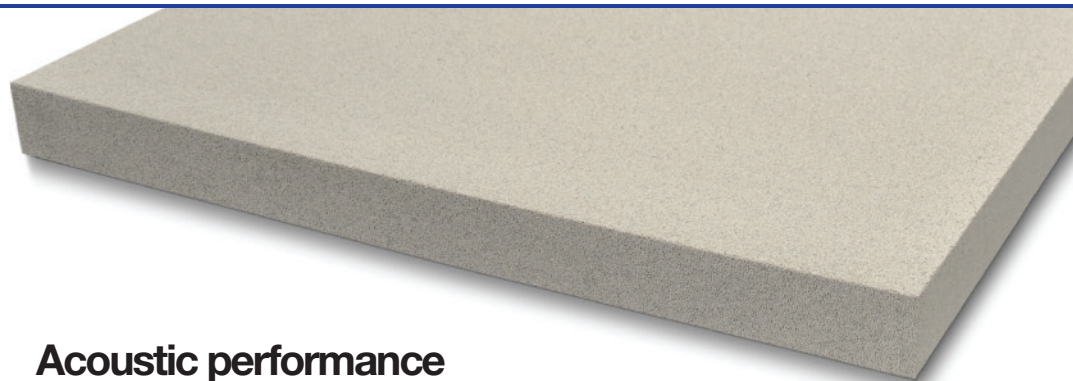
Fire resistance

BS476: Part 6: 1989 - Class 1
BS476: Part 7: 1997 - Class O

Freeze / thaw resistance

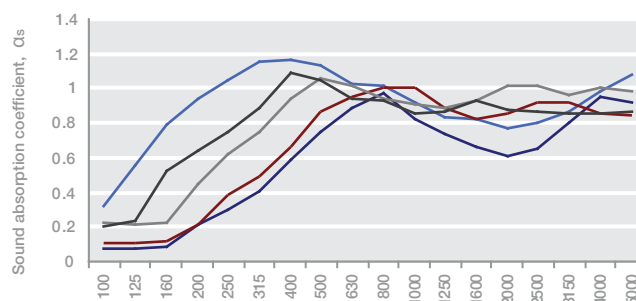
EN 1338 - Class 0

The main constituent of Quietstone Light - expanded glass beads



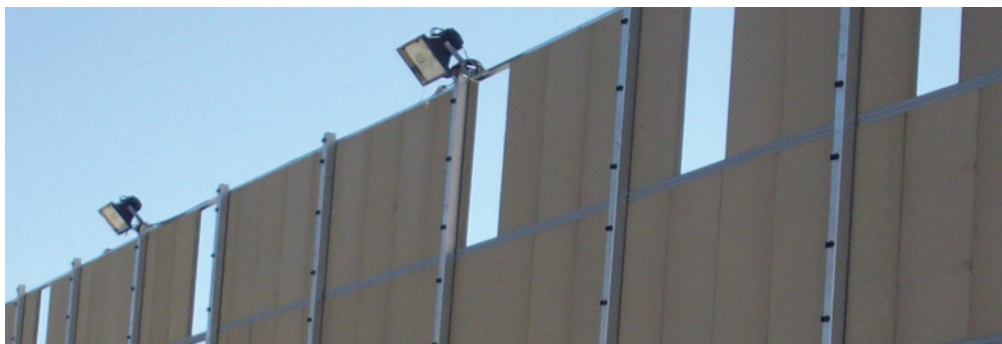
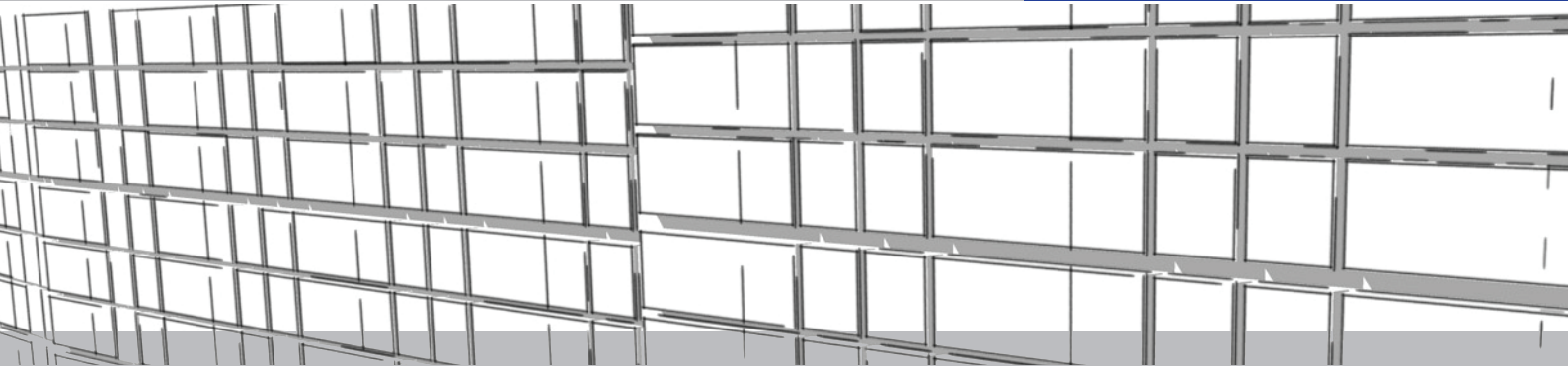
Acoustic performance

Tested in accordance with BS EN ISO 354: 2003



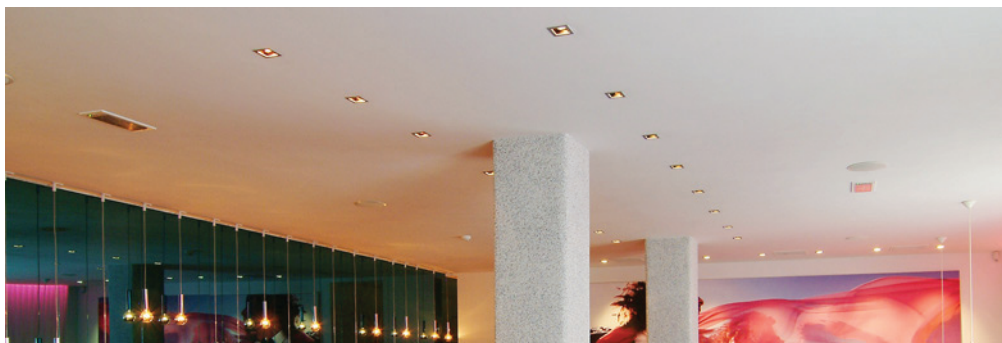
Mounting parameters:

	125Hz	250Hz	500Hz	1kHz	2kHz	4kHz	EN-ISO 11654, α _w
25mm panel, 50mm air gap	0.10	0.30	0.75	0.85	0.65	0.90	0.60 (M) (H) (H): class C
25mm panel, 50mm mineral fibre	0.55	1.05	1.10	0.90	0.80	0.90	0.90 (L): class A
50mm panel	0.10	0.35	0.85	0.95	0.85	0.85	0.65 (M) (H) (H): class C
50mm panel, 25mm air gap	0.20	0.60	1.00	0.90	1.00	1.00	0.90: class A
85mm panel 12 gap for fixings	0.30	0.75	1.00	0.90	0.90	0.85	0.95: class A



Noise barriers, tunnels and industrial

Ideal for adding an absorbent facing to noise barriers and many other areas requiring a durable and weather resistant solution. Installation is simple as panels can be cut on site and mechanically fixed or bonded to the substrate. Many build up options can be used to suit acoustic requirements and budget.



Quietspray

Seamless acoustic spray system

When an aesthetically neutral finish is needed, Quietstone Light is the base panel of our Quietspray system. The system applied to a ceiling gives a perfect, plaster-like finish whilst providing high sound absorption.

More info at: www.quietstone.co.uk/products/quietspray-seamless-acoustic-spray-system

Working with Quietstone Light

One of the main advantages of Quietstone Light is the ease of installation. Panels can be worked using normal woodwork equipment and a dust mask. We can adjust the adhesive to create very flexible panels. Likewise, if you want an even surface on flat walls, our standard panels are ideal.

Fixing methods

Bonding can be achieved using either adhesive or mechanical fixing depending on substrate and setting. We can provide Ceresit CM18 thin-bed adhesive mortar which will adhere to all solid, loadbearing surfaces. This allows for very rapid, economical installation. Alternatively, Mechanical fixing is suitable and allows for frameworks and air gaps which improve acoustic performance. Contact us for guidance and technical details.

Other applications

- Swimming pools, spas -**
- Sports halls**
- Enclosure lining**
- Duct lining**
- Render board for external plastering**
- Many more...**

 **Made in The United Kingdom**

Telephone number +44(0) 1260 253 253
 email address info@quietstone.co.uk
 Website address www.quietstone.co.uk
 Company registration number 07592216



Quietstone UK Ltd
 Quietstone Works, Nab Quarry,
 Pott Shrigley, Macclesfield
 Cheshire, SK10 5SD, UK