

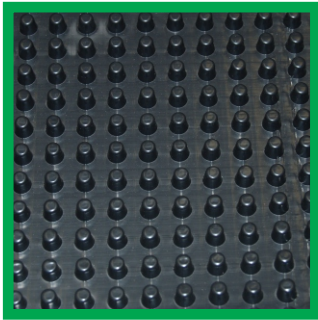


# P-DRain

## Pet Turf Drainage

**Applications:**

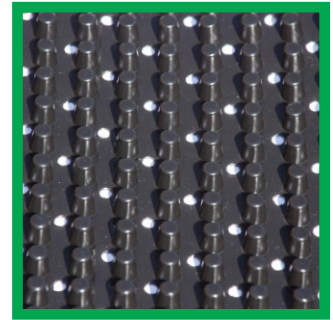
- Dog Runs
- Kennels
- Synthetic Turf Yards
- Dog Parks
- Roof Top Pet Runs



Impermeable

**Product Description:**

**P-DRain** consists of a polymeric sheet cusped under heat and pressure to form a high flow, high compressive strength dimpled drainage core. The core is available as an impermeable sheet or punched, based on application. Impermeable core works well on slabs/indoor surfaces as it protects urine from being absorbed by the concrete. Punched core allows liquids to flow through to ground surfaces below. **P-DRain** creates air void so urine can be washed down through turf to avoid it being held by the turf and cause odor. It also creates a channel to convey the urine and wash down water directly to drains.



Punched

Synthetic Turf

**P-DRain**



Base Flooring

**Physical Properties**

*Core*

*Roll*

Compressive Strength (ASTM D-1621)	15,000 psf 719 kNm2
Thickness (ASTM D-1777)	.40 in. 1.016 cm.
Flow (ASTM D-4716) Hydraulic gradient = 1	21 gpm/ft width 260 lpm/m width

Roll Weight	50,100 lbs.	22,44 kgs.
Roll Width	4, *6.5, *8 ft.	1.22, 1.98, 2.44 meters
Roll Length	50 ft.	15.24 meters

*\*Special orders for 6.5' & 8' widths available upon request.*

The information contained herein is believed by JDR Enterprises, Inc. to be accurate and is offered solely for the customer's consideration, investigation and verification. Determination of suitability for use is the responsibility of the user. JDR's Limitations, Limited Warranty, & Disclaimer along with Standard Terms & Conditions apply. See www.j-drain.com for more info. Limitations: J-DRain is resistant to chemicals in normal soil environments. However, some reagents may affect the performance of J-DRain. A JDR representative should be contacted for further information to determine the suitability of use of J-DRain in unusual soil environments. J-DRain should be limited to its exposure to ultra-violet sunlight. J-DRain should be backfilled or covered within seven days of installation. Disclaimer: All information, drawings and specifications are based on the latest published information at the time of printing. JDR reserves the right to make changes due to manufacturing improvements and engineering at any time. All physical properties are minimum average roll values (MARV). Standard variations of 10% in mechanical properties and 15% in hydraulic properties are normal.