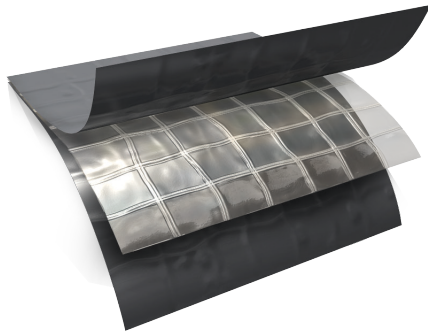


TECHNICAL DATA SHEET



**DESCRIPTION**

Griffolyn® Type-65 is a 3-ply laminate combining two layers of high-density polyethylene and a high-strength cord grid. The non-woven cord grid provides a uniform loading resistance. It is specifically engineered to provide high strength and durability in a lightweight material.

**PHYSICAL PROPERTIES AND TYPICAL VALUES**

PROPERTY	ASTM TEST METHOD	U.S. VALUE	METRIC VALUE
Weight	D-751	41.5 LB/1000 FT <sup>2</sup>	20.3 KG/100 M <sup>2</sup>
3" Tensile Strength	D-882	140 LBF	6637 N
Puncture Strength	D-4833	55 LBF	245 N
PPT Resistance	D-2582	42 LBF	187 N
Dart Impact Strength	D-1709	1.25 LBS	570 g
Cold Impact Strength	D-1790	-40°F	-40°C
Permeance	E-96	0.038 Grain/Hr•Ft <sup>2</sup> •In.Hg	2.18 NG/(PA•S•M <sup>2</sup> )

Class C, ASTM E-1745-11 Standard Specification for Water Vapor Retarders Used in Contact With Soil or Granular Fill Under Concrete Slabs.

**FEATURES AND BENEFITS**

- Multiple layers and cord reinforcement resists tears.
- UV stabilization protects the material from degradation during extended exposure to sunlight.
- Cold-crack resistance eliminates failures in extremely cold temperatures.
- Chemically resistant to withstand exposure without significant deterioration.
- Low permeability greatly inhibits moisture transmission.
- Flexibility and light weight allow for easy handling and quick installation.
- Custom fabrication is available to meet your exact specifications.
- High durability allows for significant savings through reuse and fewer replacements.

**MORE** ▶▶

**OUR CUSTOMERS DON'T JUST** *cover their business,*  
**▶ THEY PROTECT IT**



## SUGGESTED APPLICATIONS

- Architectural vapor retarder for underslab, in walls & ceilings and in roofing systems.
- Pallet, cable reel and drum covers for outside storage.
- Floor covers, dust partitions and cleanroom enclosures.
- Temporary walls, plant dividers, building enclosures and containment tents.
- Shipping container covers and liners.
- Soil covers to control leachate for stockpiles and landfills.
- Erosion control and slope protection covers.

## ORDERING INFORMATION

### AVAILABLE COLORS:

Black

### SIZES:

Standard rolls from 4' x 100' to 40' x 100' in increments of 4' widths are available for immediate shipment. Standard length and width tolerances are  $\pm 1\%$  (minimum 2")

Custom sizes up to 120' x 200' and custom fabrication are available to meet your exact specifications.

### USABLE TEMPERATURE RANGE:

Minimum: -25°F -31.6°C

Maximum: 170°F 77°C

## OUTDOOR EXPOSURE

Under normal continuous exposure the average life expectancy ranges from 18 to 30 months, depending on color.



### REEF INDUSTRIES, INC.

9209 Almeda Genoa Rd. • Houston, Texas 77075

P: 713.507.4251 • F: 713.507.4295

E-mail: [ri@reefindustries.com](mailto:ri@reefindustries.com) • [www.reefindustries.com](http://www.reefindustries.com)

TOLLFREE 1.800.231.6074

The information provided herein is based upon data believed to be reliable. All testing is performed in accordance with ASTM standards and procedures. All values are typical and nominal and do not represent either minimum or maximum performance of the product. Although the information is accurate to the best of our knowledge and belief, no representation of warranty or guarantee is made as to the suitability or completeness of such information. Likewise, no representation of warranty or guarantee, expressed or implied, or merchantability, fitness or otherwise, is made as to product application for a particular use.