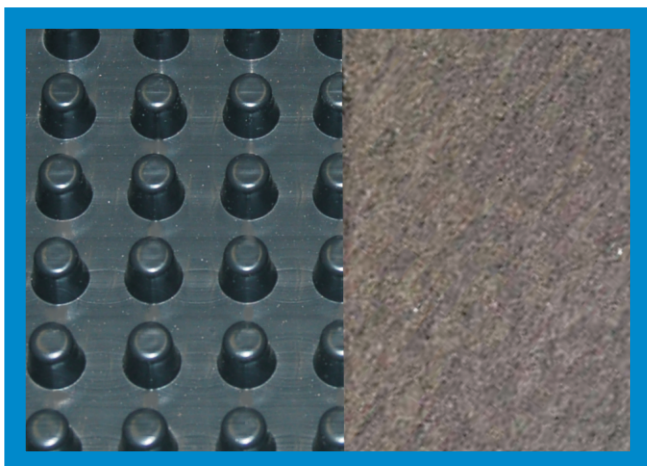


J-DRain[®] 200 series

Prefabricated Drainage Composites



APPLICATIONS

BASEMENT FOUNDATIONS

RETAINING WALLS

PLANTERS

BRIDGE ABUTMENTS

J-DRain[®] 200 Series

ESR-1901



J-DRain 200 Series Performs a multi-faceted role by providing protection for waterproofing systems and managing sub-surface water around building foundations. Soil back fill is retained by a filter fabric while allowing water to pass into the drainage core providing hydrostatic relief. Collected water is then conveyed to a proper collection system.

J-DRain[®] 200

Consists of a light duty impermeable polymeric sheet cusped under heat and pressure to form a high flow dimpled drainage core. The core is then bonded to a layer of non-woven filter fabric. The filter fabric retains soil or sand particles as well as freshly placed concrete or grout, allowing filtered water to pass into the drainage core. Limited to 20 feet of backfill.

J-DRain[®] 220

The identical properties as **J-DRain 200** with the addition of a protection sheet bonded to the back side of the cusped core providing protection for soft membrane waterproofing systems. **J-DRain 220** is compatible with waterproofing systems without the use of a protection board. Limited to 20 feet of backfill.

info@j-drain.com

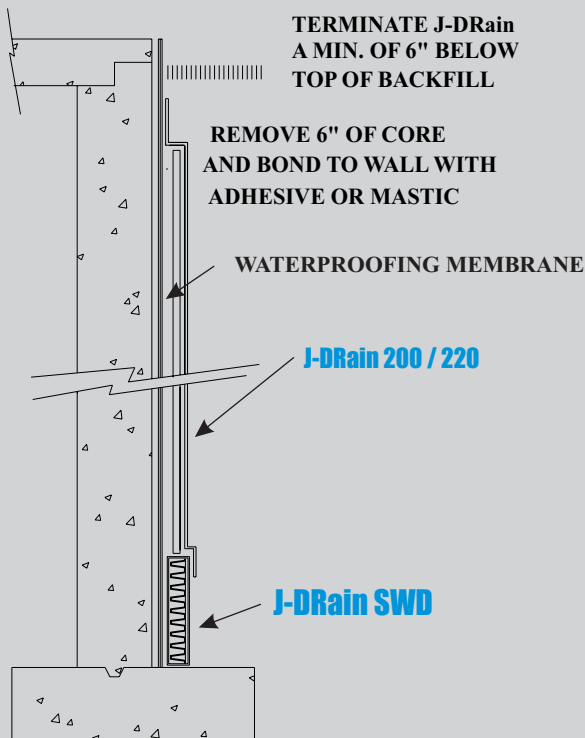
www.j-drain.com

JDR Enterprises, Inc.

292 S. Main St., Suite 200 Alpharetta, GA 30009
(800) 843-7569 (770) 442-1461 Fax: (770) 664-7951

J-DRain[®] 200 series

Prefabricated Drainage Composites

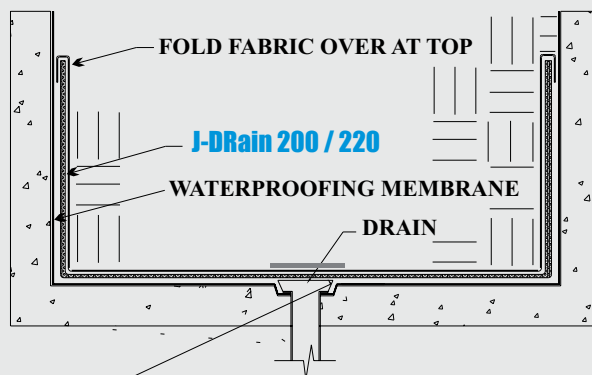


APPLICATIONS:

FOUNDATION WALL / RETAINING WALL

APPLICATIONS:

PLANTERS & ROOF GARDENS



NOTE: When using J-DRain 200 / 220 cut and remove drainage core and cover with an aluminum plate as shown.

Physical Properties

Core

Fabric

Compressive Strength (ASTM D-1621)	11,000 psf (527 kNm ²)
Thickness (ASTM D-1777)	.40 in. (10.16 mm)
Flow (Hydraulic gradient =1) (ASTM D-4716)	18 g/min/ft (223 L/min/m)
Roll Weight	38, 61, 76 lbs. / 17, 27, 34 kgs.
Roll Width	4, 6.5, 8 ft. / 1.22, 1.98, 2.44 meters
Roll Length	50 ft. / 15.24 meters

Flow (ASTMD-4491)	140 g/min/ft ² / 5704 l/min/m ²
Puncture (ASTMD-6241)	250Lbs. / 1.11 kN
AOS(EOS)	70 U.S.Sieve / .212 mm
Grab Tensile(ASTMD-4632)	100 lbs. / .45 kN

The information contained herein is believed by JDR Enterprises, Inc. to be accurate and is offered solely for the customer's consideration, investigation and verification. Determination of suitability for use is the responsibility of the user. JDR's Limitations, Limited Warranty, & Disclaimer along with Standard Terms & Conditions apply. See www.j-drain.com for more info. Limitations: J-DRain is resistant to chemicals in normal soil environments. However, some reagents may affect the performance of J-DRain. A JDR representative should be contacted for further information to determine the suitability of use of J-DRain in unusual soil environments. J-DRain should be limited to its exposure to ultra-violet sunlight. J-DRain should be backfilled or covered within seven days of installation. Disclaimer: All information, drawings and specifications are based on the latest published information at the time of printing. JDR reserves the right to make changes due to manufacturing improvements and engineering at any time. All physical properties are minimum average roll values (MARV). Standard variations of 10% in mechanical properties and 15% in hydraulic properties are normal.

info@j-drain.com

www.j-drain.com

JDR Enterprises, Inc.

292 S. Main St., Suite 200 Alpharetta, GA 30009
 (800) 843-7569 (770) 442-1461 Fax: (770) 664-7951